

Location:	<b>Central Italy</b>
Date:	<b>June 2006</b>
System Used:	<b>SWATHplus-H 468 kHz</b>
Ancillaries:	<b>CodaOctopus F180, Thales Z-Max RTK</b>

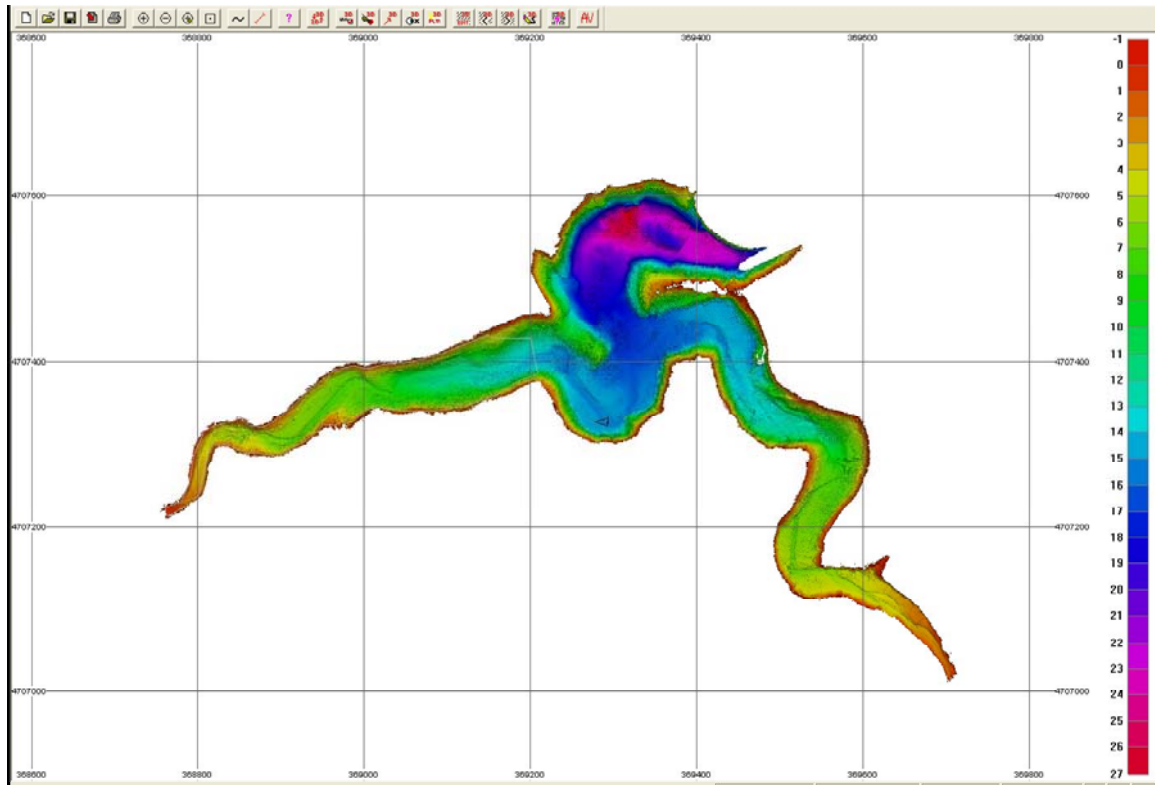
SWATHplus-H 468 kHz survey of a dam in the central mountains in Italy. The survey consisted of a 1km by 200m lake behind a dam wall. Water depths ranged from 0m to 28m. Survey undertaken in under a day, with a day of preparation and mobilisation on the previous day. Motion sensing and positioning using a CodaOctopus F180 and a Thales Z-Max RTK used for height control.



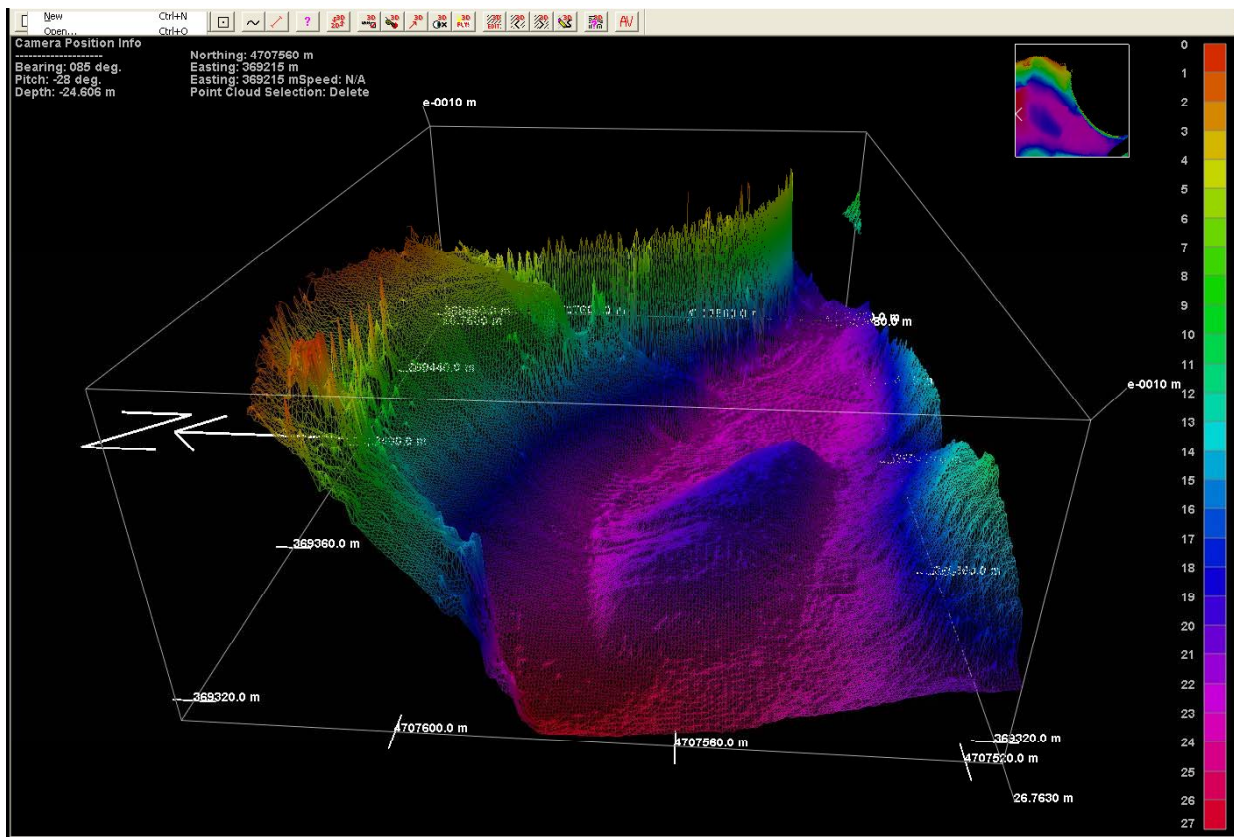
*Dammed lake.*



*Vessel deployed by crane from dam wall.*



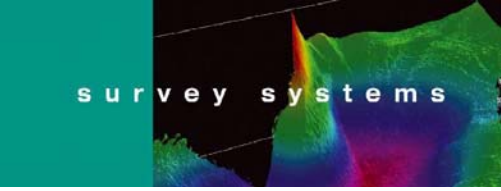
Bathymetry of lake.



3d view of the dam face.



product development



survey systems



engineering design

Survey Note No.: 0609



Email: [info@sea.co.uk](mailto:info@sea.co.uk)

SEA Copyright 2008



Web: [www.sea.co.uk](http://www.sea.co.uk)